




 **FINO** SERIES



**SmartPowerpoint**

A woman with dark hair is lying in bed, covered by a patterned blanket, with her eyes closed in a peaceful sleep. The room is dimly lit with a strong blue light, creating a calm and serene atmosphere. The background shows a headboard and some blurred furniture.

The KASTA Smart Powerpoint is easy to set up and makes it even easier to manage your household electronic devices with a tap of your smartphone.

The free KASTA app lets you control your powerpoint from any Android ( 4.4 and higher ) or iOS ( iOS 9 and higher ) smartphone.

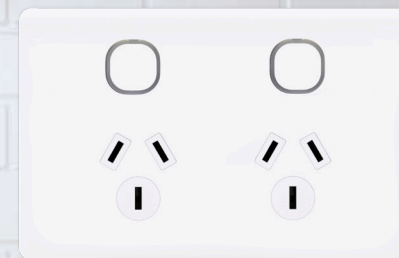
Use in combination with battery remotes or mains powered switches to create one touch scenes and groups.

Sleep well in your KASTA Home with the  
KASTA Smart Powerpoint



## FEATURES

- Contemporary design
- Slim 8mm plate depth
- Soft press push button operation
- LED status indication
- Short press for On/Off control
- Child lock enable/disable via local switch button or APP
- Individual control for each outlet
- Energy monitoring of each outlet
- Robust wireless Bluetooth mesh
- iOS & Android APP setup and control
- Group and scene functions
- Timer and schedule functions
- UV stabilised to avoid discolouring
- 3-year warranty





### Your Home, Your Rules

Create one-touch routines to automate your smart home. Never reach for those out-of-the-way powerpoints again.



### Security

Use Away-Mode schedule to turn devices on and off at different times to give the appearance that someone is home while you are away.



### Convenience

You can easily turn off the lights and other devices in the living room without getting out of bed, or conveniently schedule all lights to go off by midnight.



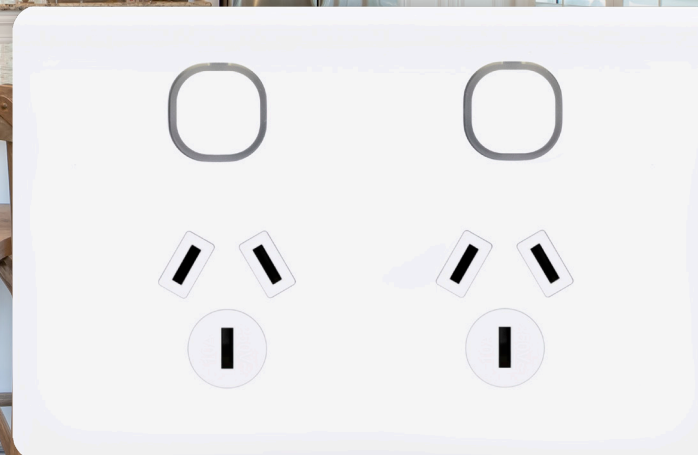
### Enhanced Scenes

Turn non-connected, plug-in lights smart with the KASTA Smart Powerpoint; Expand your KASTA ecosystem and start controlling non-connected products with your smartphone or KASTA remotes.



### Child Lock

Deter little hands from powering on a socket by enabling Child Lock conveniently by long press of local button or via app.



Control your  
KASTA Smart Powerpoint  
with these remote devices



5-Button Battery Remote  
(5BCBH-W)



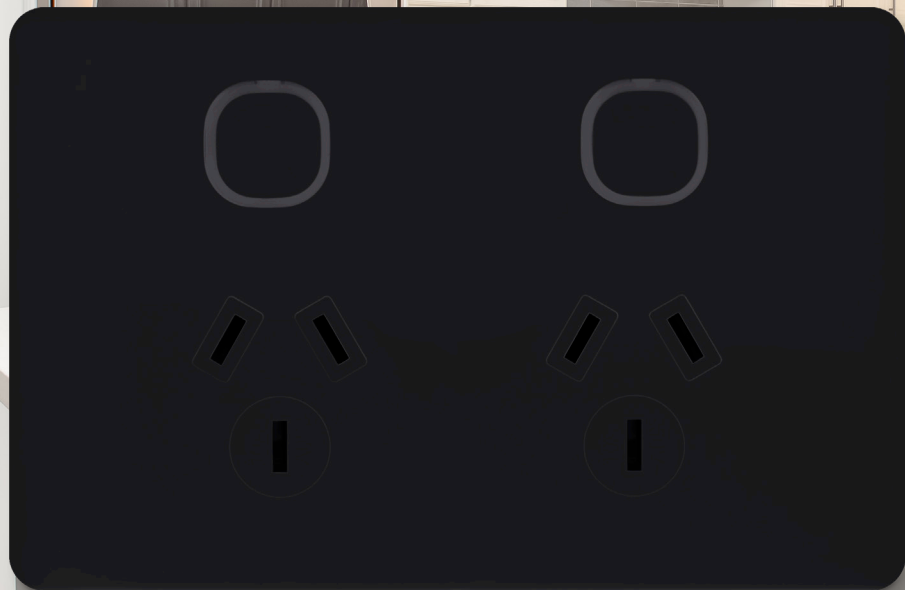
1-Button Battery  
Wall Mount Remote  
(KASTA RB02-WH)

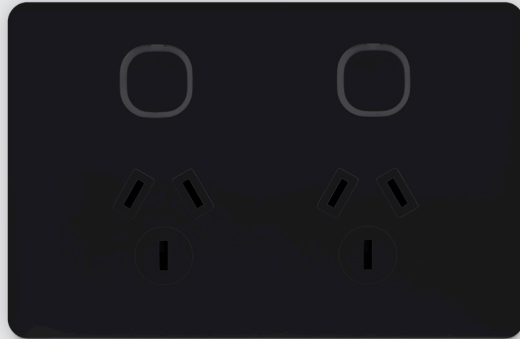
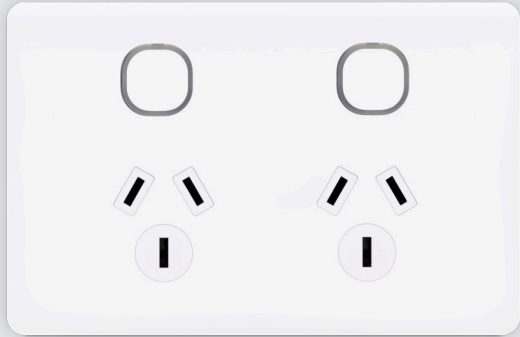


1 Button Mains Powered  
Wall Mount Remote  
(1BMBH-W)



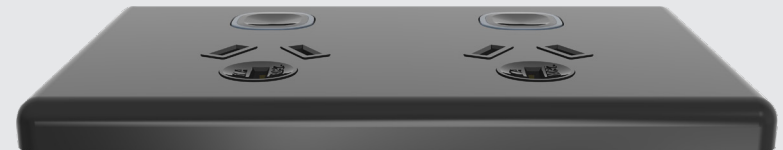
Complete the look with complimentary  
UNISON™ 240 powerpoints





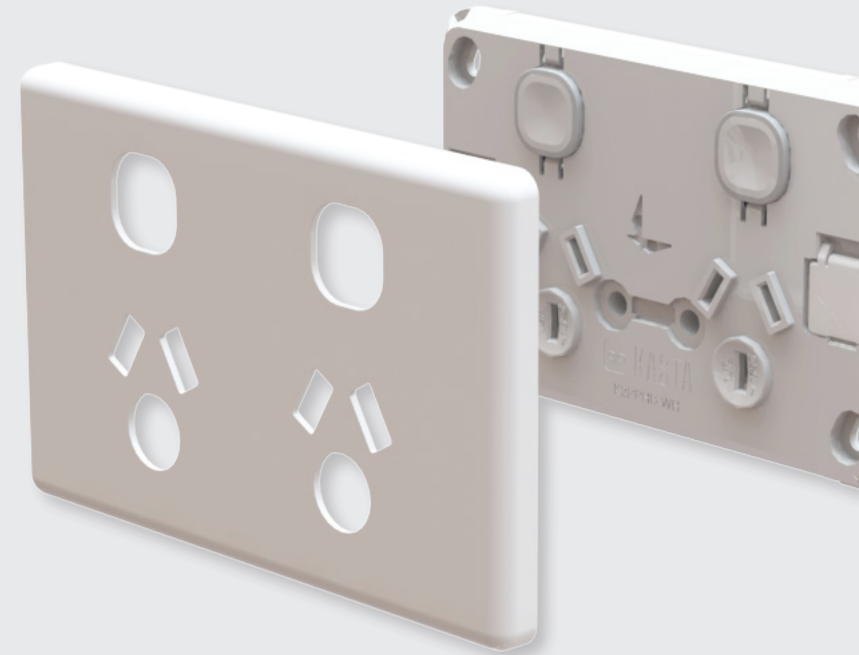
## SPECIFICATIONS

Product code	KF2PHHB-WH (White) / KF2PHHB-BK (Black)
Rated Voltage	220-240V a.c.
Current Rating	10A
Operating Ambient Temp.	-20 to 40°C
Energy Monitor	0.01A to 10A
Plate Depth	8mm
Terminal Size	16mm <sup>2</sup> (accommodates 4x2.5mm <sup>2</sup> cables)
Terminal Screw Type	Combination Flat/Philips head
Mounting Points	84mm/100mm and Corners
Mounting Screw Type	Combination Flat/Philips head
Plate Colour / Finish	White / Black
Housing Material	Polycarbonate (PC)
LED Indicator	Blue (On) / Green (Child Lock)
Protection	Over current, over voltage, over temperature Auto recovery if fault is removed Settings retained
Standards Complied	AS/NZS 3112, AS/NZS 60669.2.1, AS/NZS 4268 AS/NZS CISPR 15



## Size Matters....

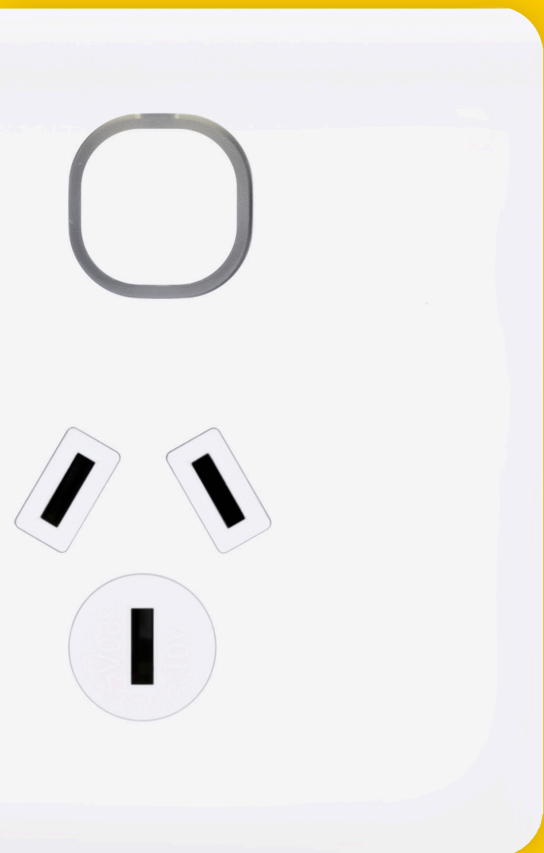
- Slim 8mm face plate
- Suitable for new home or retrofit
- Fits standard first fix mounting accessories (e.g. C-clips, nail brackets, wall boxes)
- Flush mounting centres (not recessed) for quicker installation
- UV stabilised to avoid discolouring
- Combination Flat/Philips head screws
- Backed off terminal screws and deep tunnels allow fast fitment of cables
- Colour-coded terminals for ease of identification
- Multiple mounting facilities at both 84mm and 100mm, along with corner fixing points
- Insulated screw caps hinged to the grid plate to provide IP2X rating on mounting screws
- IP Stud identification provision



# Enhance your KASTA Automated Home

with the KASTA App and an expanding range of smart devices.





KASTA Technologies (AU) Pty Ltd  
kasta.com.au  
info@kasta.com.au  
1300 001 533