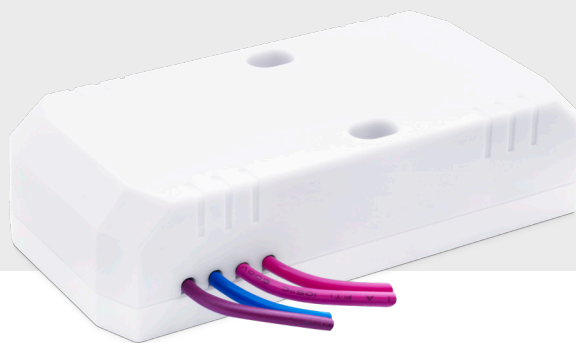


AC Ceiling Fan Controller

KASTA-FC150A



Smart AC ceiling fan controller providing capacitor switched 3-speed control of a fan plus ON/OFF fan light control

FEATURES

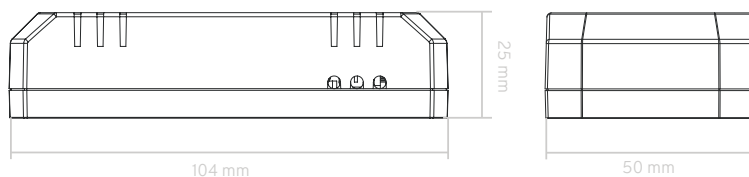
- Control of AC powered ceiling fan motors (max. 150W motor load)
- Contains relay for ON/OFF control of fan light (max. 300W load)
- Provides capacitor switching for 3-speed control of fan speed
- 7-wire connection for power, fan, light and momentary switch mechanisms
- Reliable Bluetooth® mesh network connectivity to all KASTA devices
- 8-way multiway control
- Short press on input S1 to toggle fan light, short press on input S2 to toggle fan and fan speed
- Long press on input S2 to cycle through fan speeds (Low>Medium>High, High>Medium>Low)
- Built-in over-voltage and over-current protection
- Supports core KASTA functionality - control devices, groups, scenes, timers and scheduling
- Easily installed in the hangsure bracket under the fan canopy
- iOS and Android app setup and control
- 3 year warranty

SPECIFICATIONS

Power Supply	220-240V a.c. 50Hz
Operating Ambient Temperature	-20 to 40°C
IP Rating	IP20
Physical Connection Type	Fly leads
Wiring Connections	Active, Neutral, Fan Motor, Fan Light, Momentary Mechanisms
Load Output Maximum	Fan: 150W (0.6A) Light: 300W (1.2A)
Load Compatibility	3-speed capacitor switched 240V a.c. ceiling sweet fan motor*, with or without inbuilt light
Housing Material	Polycarbonate (PC)
Standards Complied	AS/NZS 60669.2.1, AS/NZS 60669.1, AS/NZS CISPR 14.1, AS/NZS CISPR 15, AS/NZS 4268

*Minor variations in the speed of the fan may be evident when compared to the original controller, with differences also possible between the same model of fans.

DIMENSIONS



CONNECTION

