

# How to upload BLE local mesh to cloud

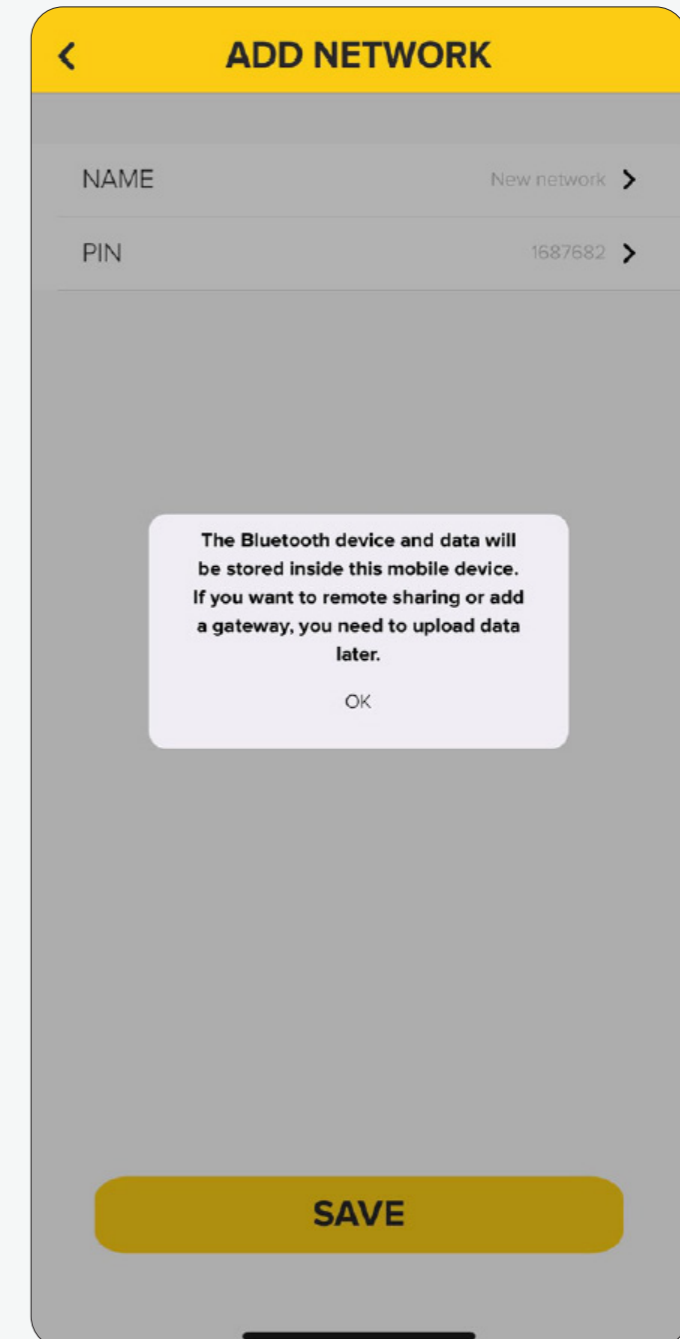
Instruction guide

## How to upload BLE local mesh to cloud: Features & Overview

In the KASTA app version 2.4.0 release, we added a new function, enabling local network configuration.

Now when users create a new BLE (Bluetooth Low Energy) local mesh network, it will firstly be locally stored on the device which is being used for setup i.e. phone or tablet device (to be uploaded to the cloud at a later time).

This function is designed to improve the user's experience, allowing access to most of the app functions even when there is no internet, or the internet connection is unstable.



### **SOME OPERATIONS REQUIRING CLOUD UPLOAD**

In the local network, users can add/modify KASTA devices and perform other network setup functions without an internet connection. However, if users want to do the following operations, the local network needs to be uploaded to the cloud first:

- A. Using other phone or tablet devices to login to the same KASTA account and control this local network.
- B. Adding the gateway into this network.
- C. Using 'Members' function to share the network to another KASTA account.

### WHEN AND WHERE TO UPLOAD TO THE CLOUD

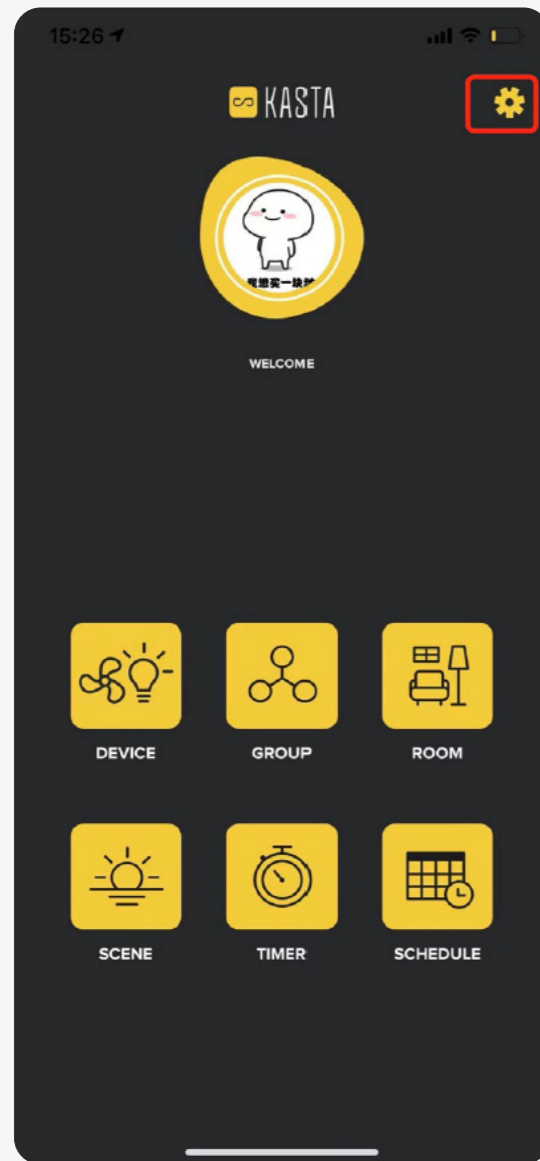
When users want to upload the local network to the cloud, it will include all of the existing network configuration and saved data of this local network. Therefore, users need to ensure the internet they are going to use for uploading is stable.

You do not need to upload everything inside the project, if the building has poor 4G signal. You can click 'upload' when you are offsite with stable internet connection.

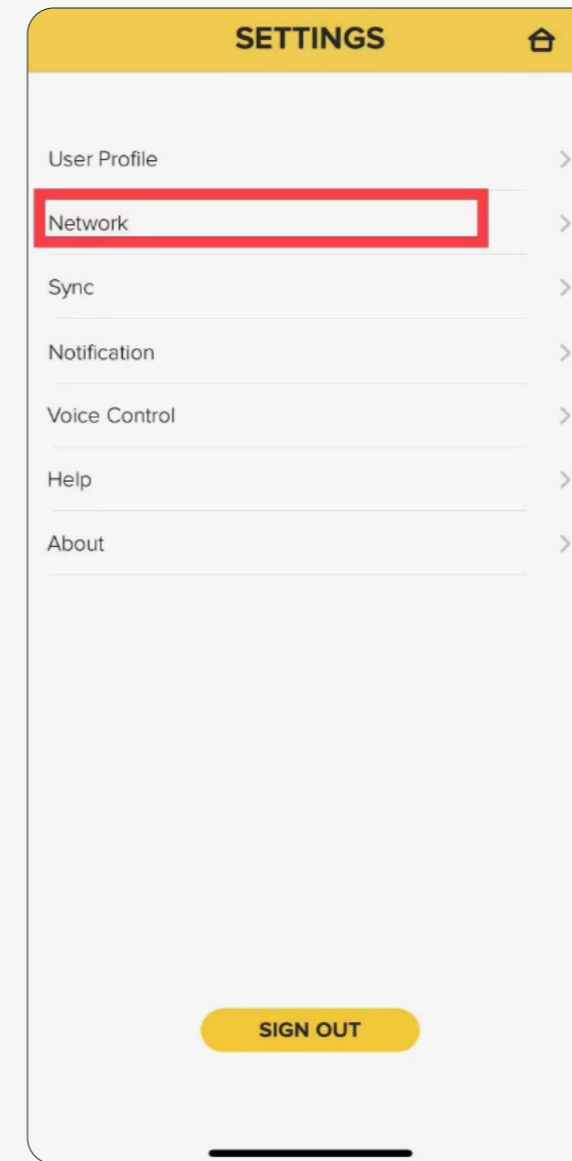
# How to upload BLE local mesh to cloud: Method One

## METHOD ONE

1. Enter the main Settings menu of KASTA app



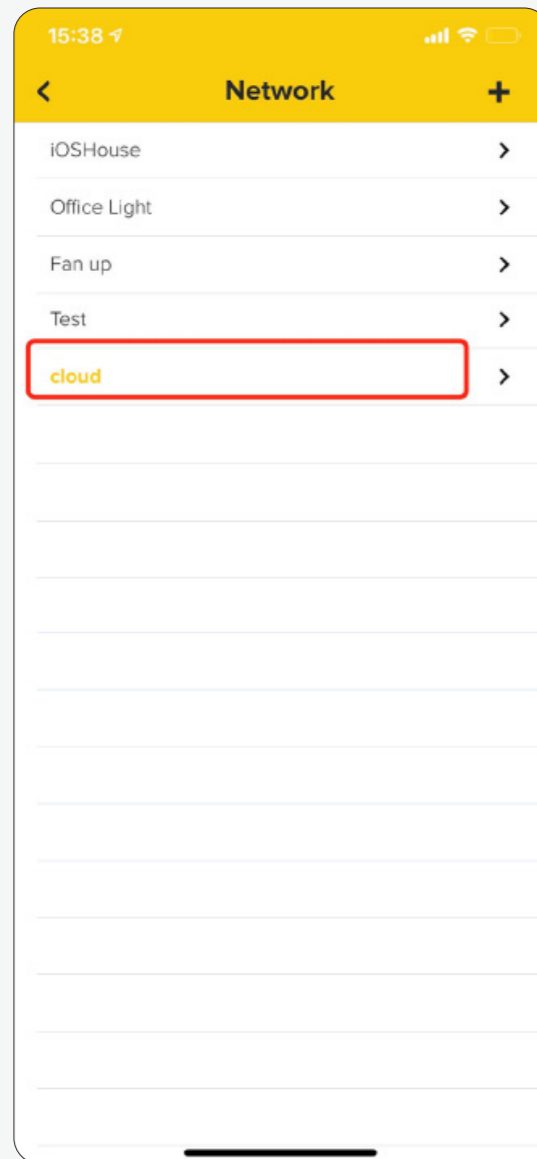
2. Select 'Network'



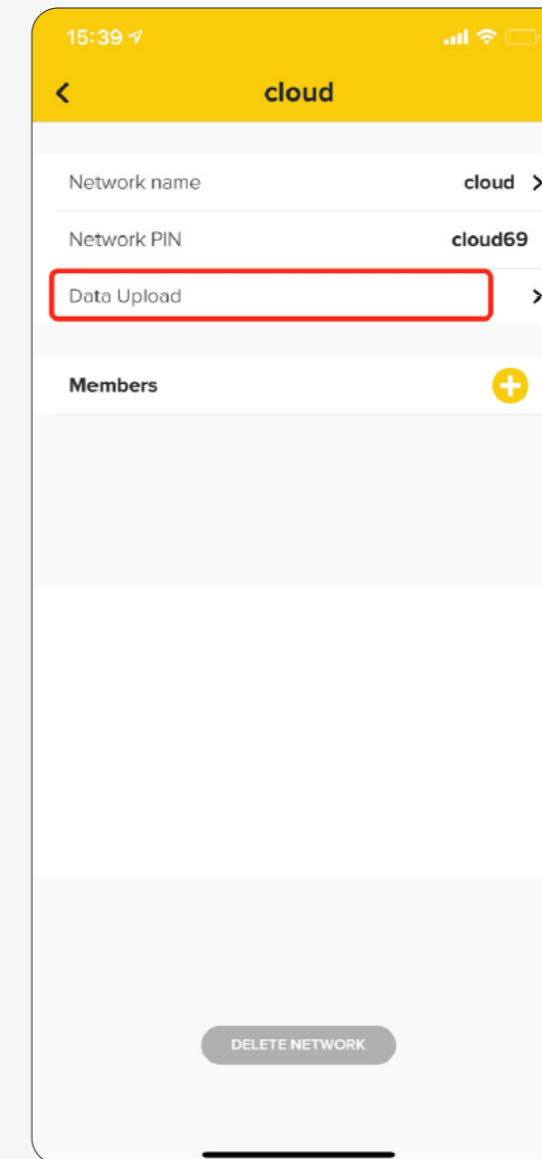
# How to upload BLE local mesh to cloud: Method One

## METHOD ONE *(continued)*

3. Select your chosen network



4. Choose 'Data Upload' to upload your network and configuration to the cloud

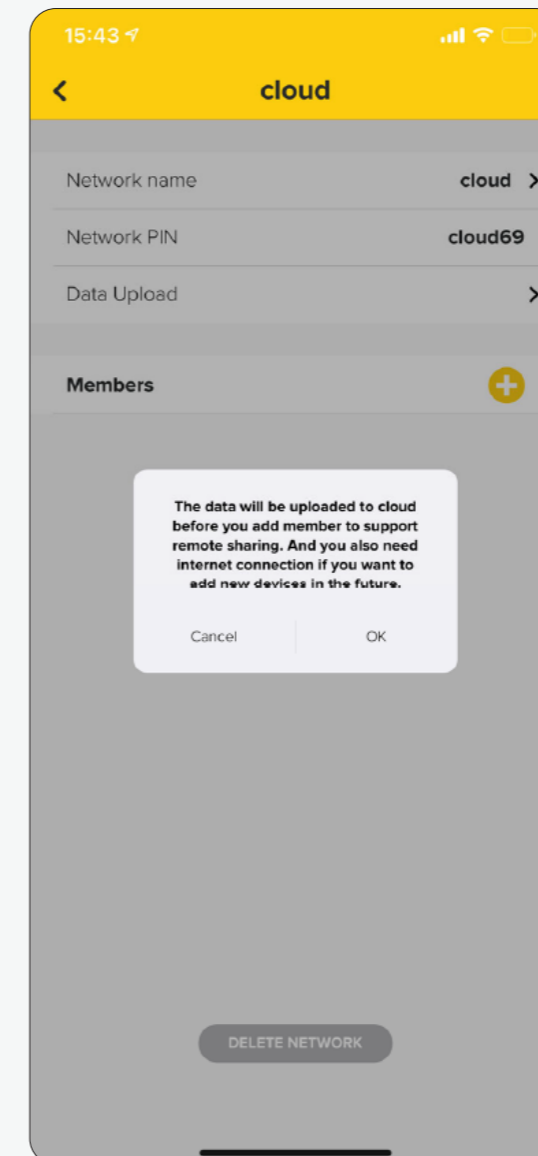


## How to upload BLE local mesh to cloud: Method Two

### METHOD TWO

When adding another member to the mesh network, the system will generate a pop-up window to confirm and perform the action of uploading data to the cloud.

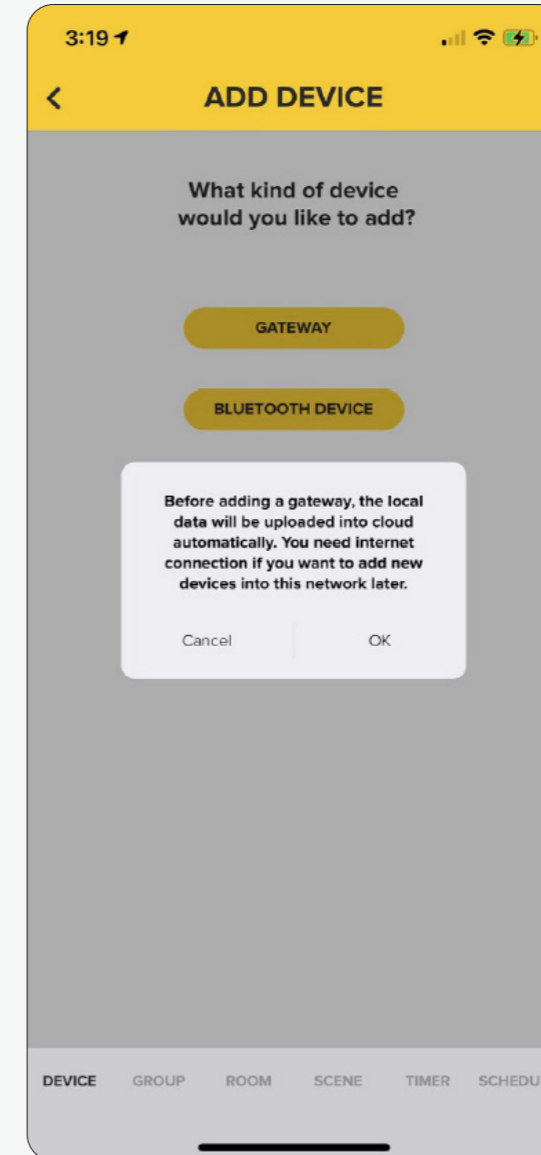
Select 'OK' to continue.



## METHOD THREE

When user adds a Gateway device in the app, the system will generate a pop-up window to confirm and perform the action of uploading data to the cloud.

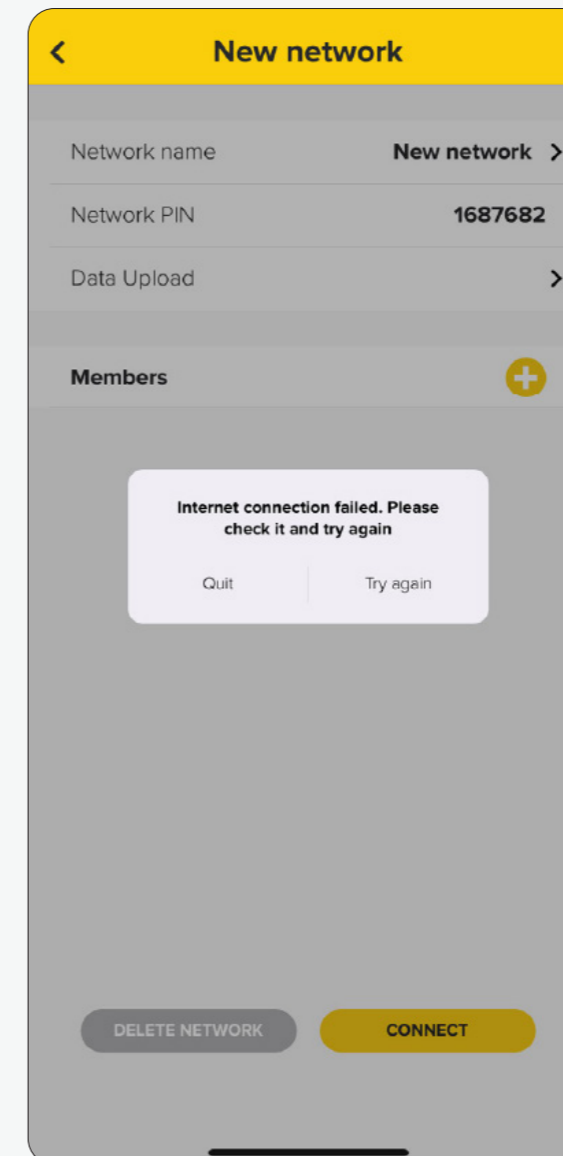
Select 'OK' to continue.





### FAILED TO UPLOAD THE NETWORK

If the internet is not good or stable, the local network cannot be uploaded successfully. It is recommended to check the internet and try to upload again with good internet when the following prompts appear.



## Need help or more information?

Contact our KASTA Support Team

phone: (02) 9168 5900

email: [support@kasta.com.au](mailto:support@kasta.com.au)

[kasta.com.au](https://kasta.com.au)

